

INDEX	
SHEET NO.	SUBJECT
1	Fabrication Tolerances, Index, and General Notes
2	Fabrication Tolerances, Prestressed Box Beam
3	Fabrication Tolerances, Prestressed I-Beam and Bulb-Tee Beam

GENERAL NOTES:

1. Tolerances shown are maximum permissible variations from the dimensions shown on the plans or shop drawings. Tolerances shall not be considered cumulative. Longitudinal tolerances are based on design length. Casting length shall be adjusted to compensate for shrinkage and plastic flow.
2. Mild reinforcing steel concrete cover tolerance shall be +3/8 in. to -1/8 in.
- 3 Vertical camber shall be checked within 72 hours of transfer of prestressing force. Camber shall also be measured within three days prior to shipping and any exceedances shall be reported to the Engineer prior to shipping.

Permitted camber variation from design camber is as follows:

I-beam or bulb-tee beam:

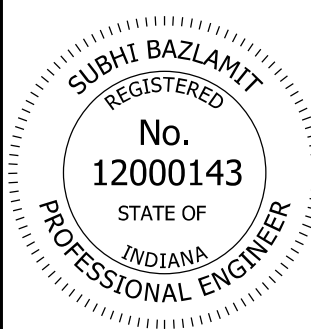

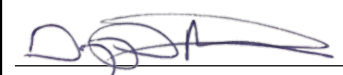
±1/8 in. per 10 ft - 0 in. length, with

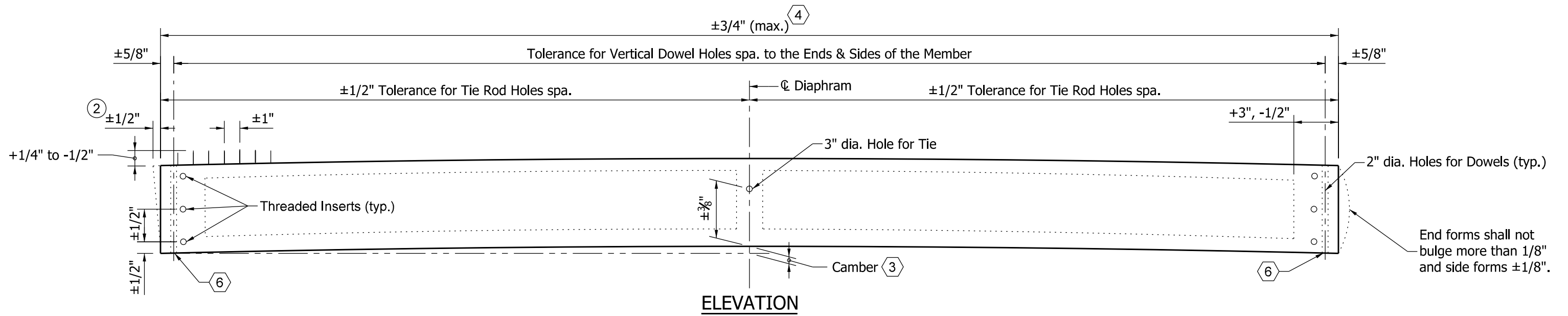
- ±1/2 in. maximum for member length of 80 ft - 0 in. or less
- ±1 in. maximum for member length of greater than 80 ft - 0 in.

Box beam:

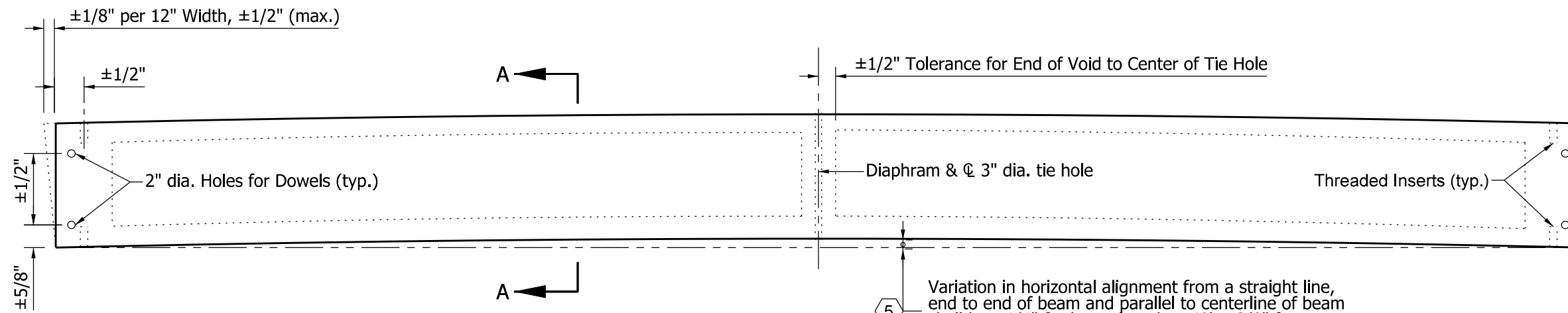
±1/8 in. per 10 ft - 0 in. length with ±1/2 in. maximum

- 4 Tolerance in length of beam shall be checked after the final curing phase and within three days prior to shipping.
- 5 Horizontal-alignment tolerance shall be checked immediately after removal of forms and strand release, and prior to removal from bed.
- 6 At concrete bearing area, deviation from plane surface when tested in all directions of the plane surface with a steel straightedge shall not be more than ±1/8 in.

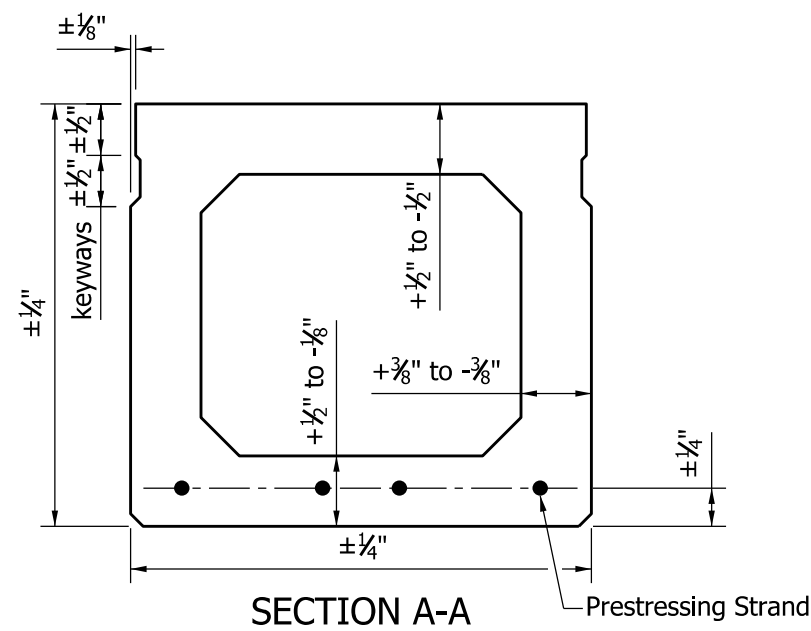
INDIANA DEPARTMENT OF TRANSPORTATION	
FABRICATION TOLERANCES, INDEX, AND GENERAL NOTES	
SEPTEMBER 2022	
STANDARD DRAWING NO.	E 707-BPBF-01
	 6/15/2022 DESIGN STANDARDS ENGINEER DATE
	 06/27/2022 CHIEF ENGINEER DATE



ELEVATION




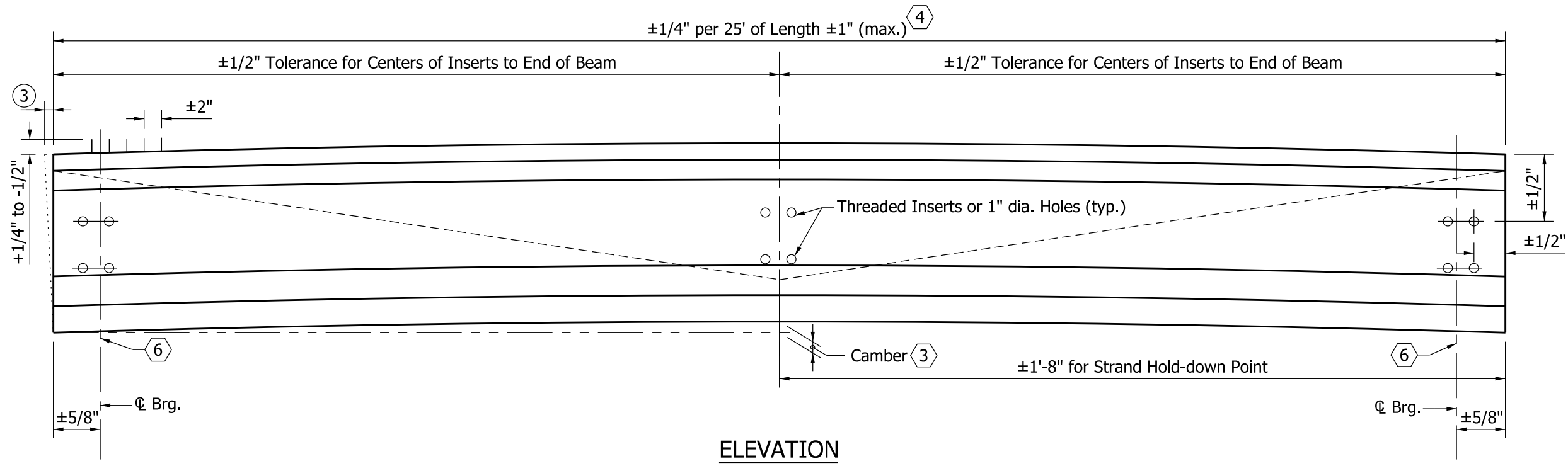
PLAN



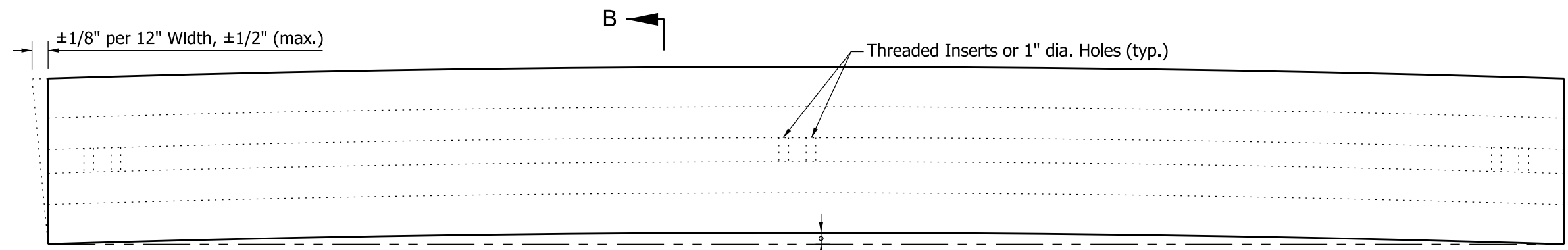
NOTES:

1. Local smoothness of the beam shall not vary more than 1/8" per 10 ft - 0 in. as measured from the straightedge.
- ② Tolerance of beam ends for deviation from a true vertical with respect to top and bottom surfaces.

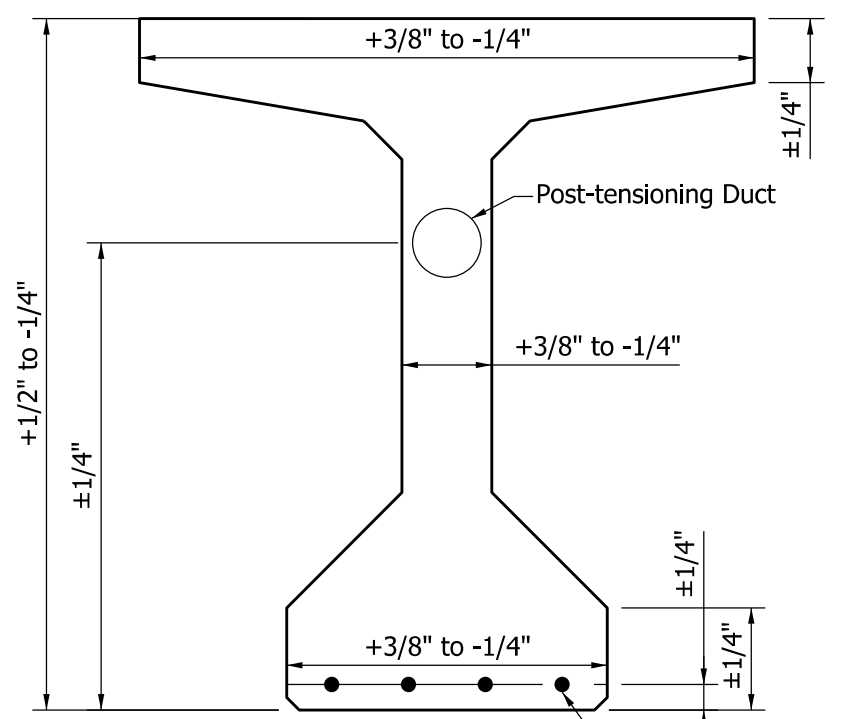
INDIANA DEPARTMENT OF TRANSPORTATION	
FABRICATION TOLERANCES, PRESTRESSED BOX BEAM	
SEPTEMBER 2022	
STANDARD DRAWING NO. E 707-BPBF-02	
	<p style="text-align: right;"><i>Subhi Bazlamit</i> 6/15/2022 DESIGN STANDARDS ENGINEER DATE</p> <p style="text-align: right;"><i>[Signature]</i> 06/27/2022 CHIEF ENGINEER DATE</p>



ELEVATION



PLAN

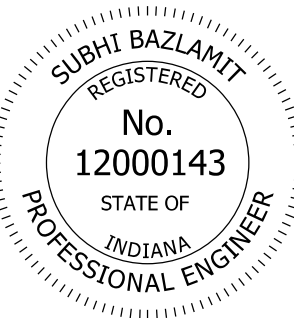


SECTION B-B

(Bulb-Tee Section Shown, I-Beam Similar)

NOTES:

1. Center of gravity of depressed-strands group at the end of the beam shall not be more than ±1/2 in.
2. Local smoothness of the beam shall not vary more than 1/8 in. per 10 ft - 0 in. as measured from a straight line.
3. Horizontal tolerance of beam ends for deviation from a true vertical with respect to top and bottom surfaces. Vertical tolerance shall be ±3/16 in. per 12 in. of beam height, 1 in. max.

INDIANA DEPARTMENT OF TRANSPORTATION	
FABRICATION TOLERANCES, PRESTRESSED I-BEAM AND BULB-TEE BEAM	
SEPTEMBER 2022	
STANDARD DRAWING NO. E 707-BPBF-03	
	<p style="text-align: right;"><i>Subhi Bazlamit</i> 6/15/2022 DESIGN STANDARDS ENGINEER DATE</p> <p style="text-align: right;"><i>[Signature]</i> 06/27/2022 CHIEF ENGINEER DATE</p>